

Supplementary material

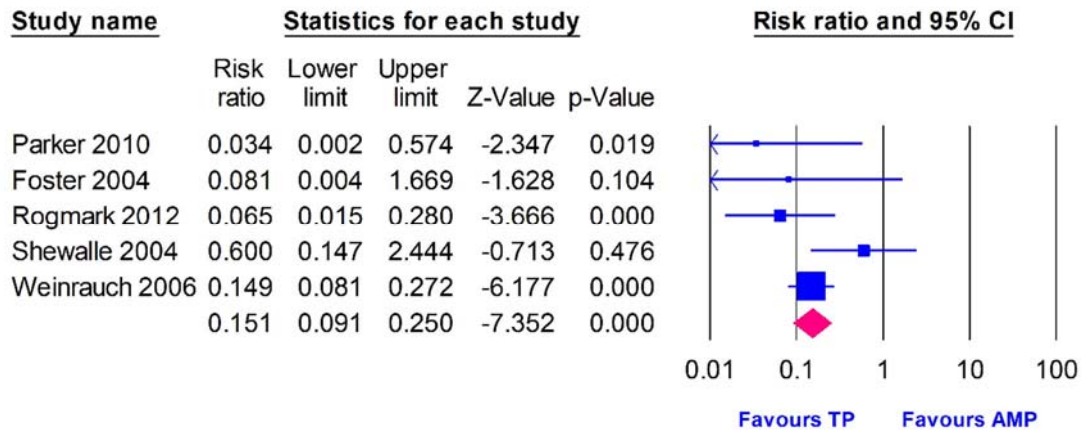


Figure A.1. Forest Plot of risk ratio (RR) of intraoperative fractures with 95% confidence interval, comparing between Thompson and Austin Moore groups.

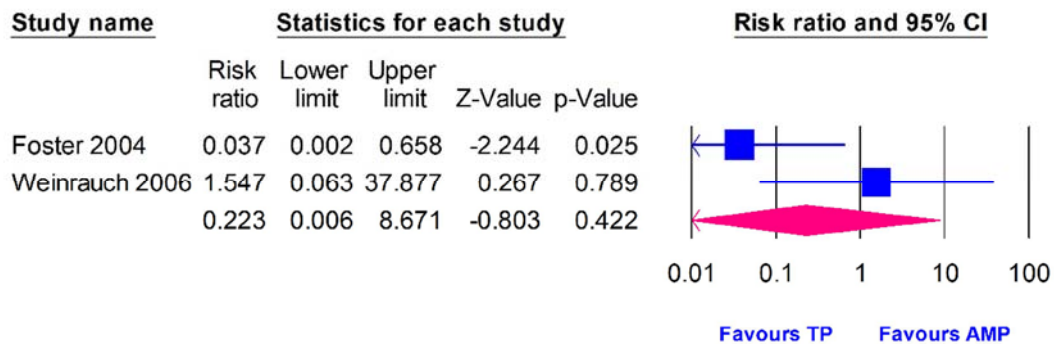


Figure A.2. Forest Plot of risk ratio (RR) of periprosthetic fractures with 95% confidence interval, comparing between Thompson and Austin Moore groups.

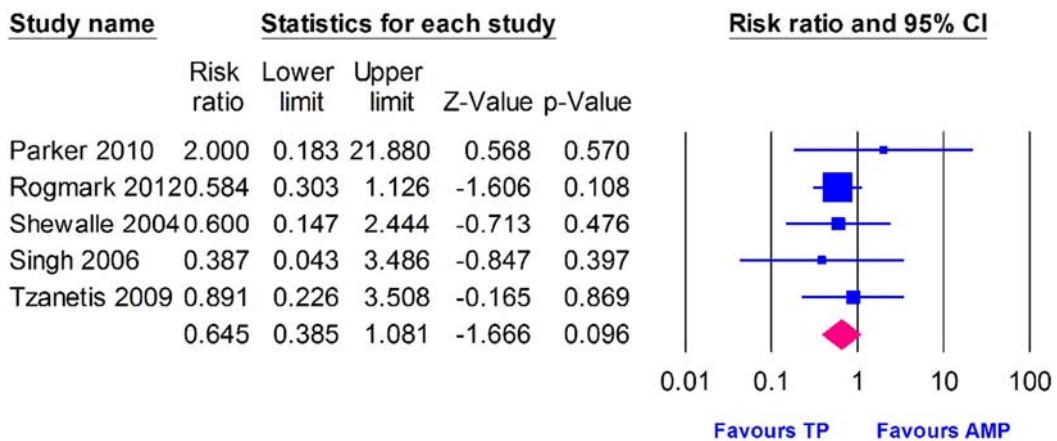


Figure A.3. Forest Plot of risk ratio (RR) of prosthetic dislocations with 95% confidence interval, comparing between Thompson and Austin Moore groups.

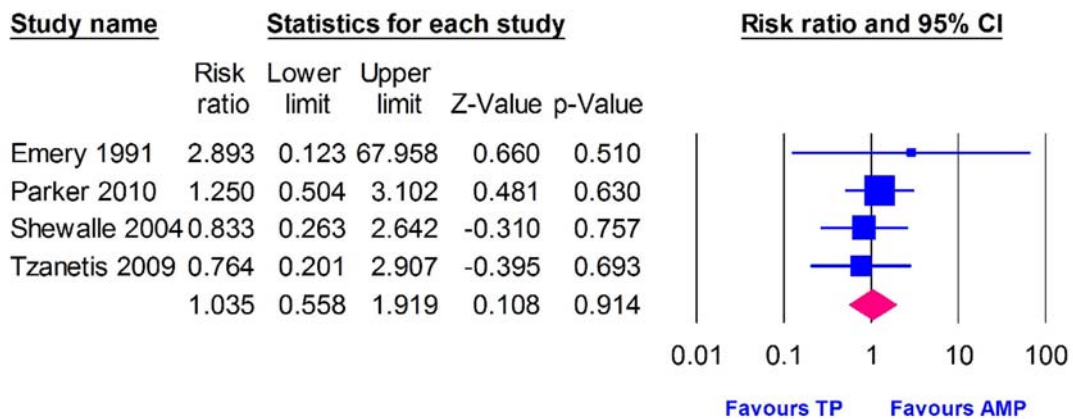


Figure A.4. Forest Plot of risk ratio (RR) of wound infection with 95% confidence interval, comparing between Thompson and Austin Moore groups.

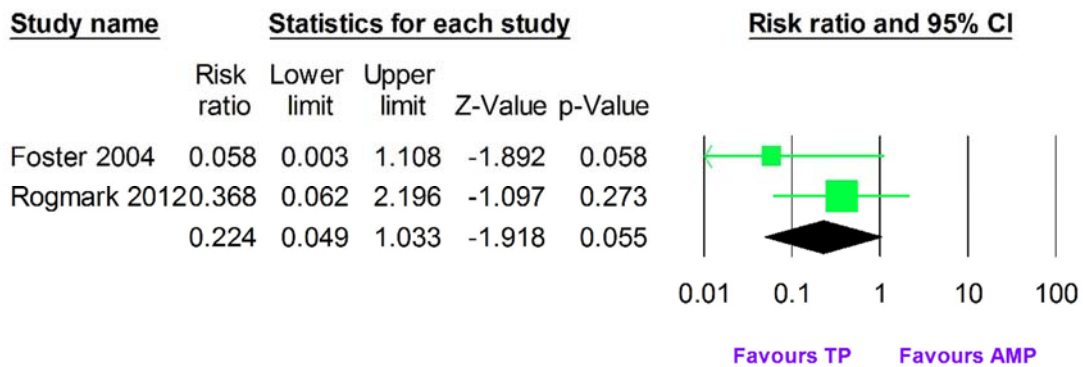


Figure A.5. Forest Plot of risk ratio (RR) of surgical complications with 95% confidence interval, comparing between Thompson and Austin Moore groups.

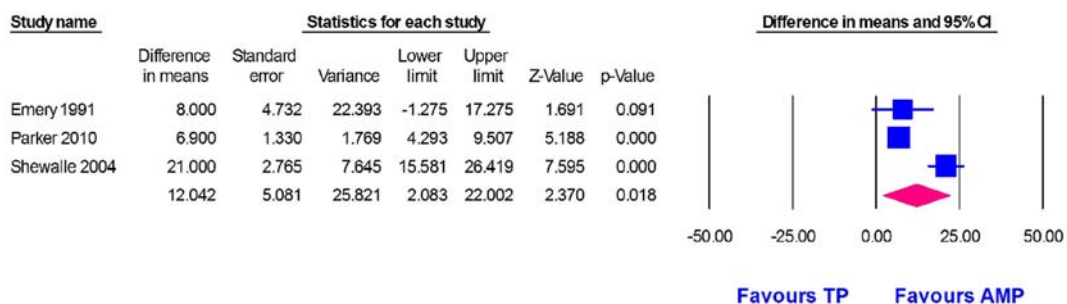


Figure A.6. Forest Plot of mean difference (MD) of operative time with 95% confidence interval, comparing between Thompson and Austin Moore groups.

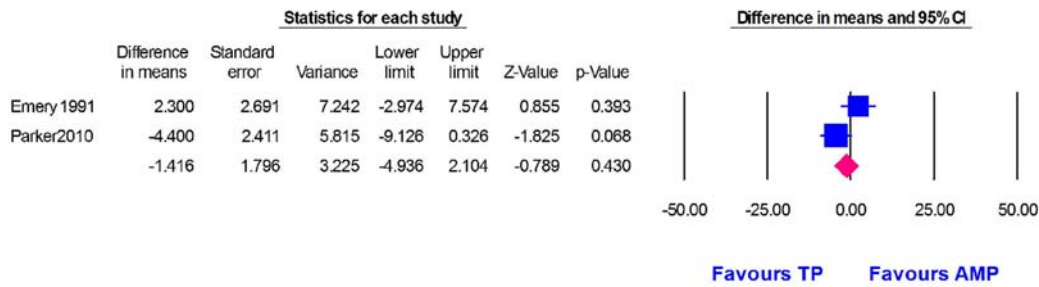


Figure A.7. Forest Plot of mean difference (MD) of hospital stay with 95% confidence interval, comparing between Thompson and Austin Moore groups.

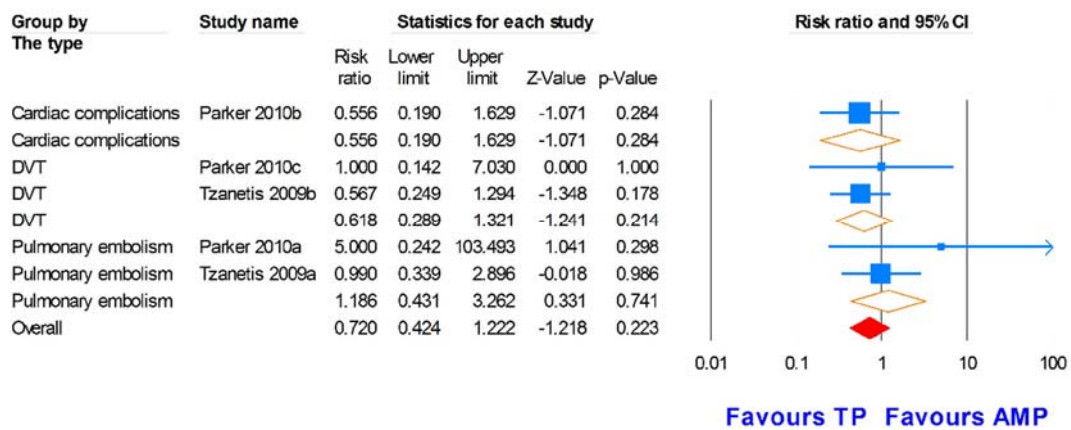


Figure A.8. Forest Plot of risk ratio (RR) of medical complications with 95% confidence interval, comparing between Thompson and Austin Moore groups.

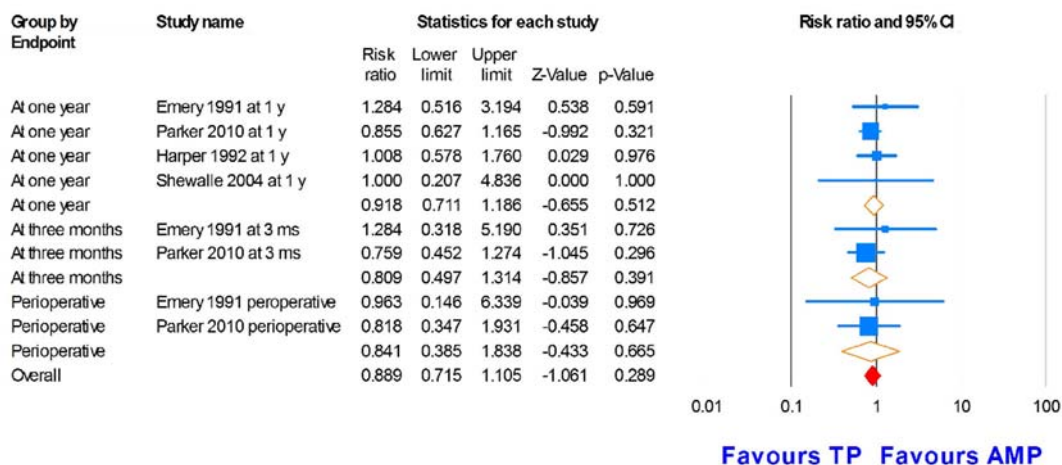


Figure A.9. Forest Plot of risk ratio (RR) of mortality with 95% confidence interval, comparing between Thompson and Austin Moore groups.